

IL
CUORE
GIALLO

N E W C A P I T A L

Developed By

ARCHPLAN
DEVELOPMENTS



IL
CUORE
GIALLO
NEW CAPITAL

Archplan Developments is a promising Real Estate developer and sister company of Archplan architectural designer and urban planner one of the most outstanding companies in that field in the Middle East and Africa. Archplan founded in 1985 by prof. Ayman Ashour, professor of Architecture and Urban planning Ain Shams University It has expanded in collaboration with international experts and firms from England, Italy, Portugal, Denmark and Germany to develop Mega Scale projects through 5 branches in Egypt, England, Sultanate of Oman, United Arab of Emirates and Morocco.

PROMOTING **SUSTAINABLE , SMART , GREEN** LANDMARKS

Sustainability

We prioritize resource use, renewable energy, and environmental protection to support a sustainable future.

knowledge

We strive to understand our markets and our clients' needs.

Connected

Relationships are everything to us; we connect people to their homes and to their communities.

Passion

We believe that working with "all heart" can change the world.

Playful

We love what we do, and it shows. Our client's needs, and best interests are at the heart of everything we do.

Effectiveness

Erecting buildings within green areas significantly enhances their effectiveness and sustainability.



Ahmed Ashour

CEO

Designing and planning numerous national mega projects, Archplan has prodigiously contributed to Egypt's new republic on the architectural, industrial, technological, and social levels. Currently, such highly reputable firm is planning and constructing iconic buildings in the New Administrative Capital to render it a competent futuristic city.

MSC Architect

Ahmed Ashour



Mostafa Bassiouny

DEPUTY CEO

Il Cuore Giallo is set to revolutionize the future of real estate investment by leveraging innovative business models and redefining the standards for modern administrative buildings. This project is envisioned to set unparalleled standards for functionality, sustainability, architectural design, and technological integration.

Sustainability is at the core of Il Cuore Giallo, making it a commitment to reduce environmental impact. Located in a key urban area and in a highly desirable location known for its luxurious community, this unique combination positions Il Cuore Giallo as a prime investment opportunity, promising strong returns and setting a new benchmark in the real estate market.

What Makes Us Distinct ?

We're here to guide you to the right property in the right place, at the right time.



STEFANO BOERI

The Italian architect Stefano Boeri, the world-renowned architect specialized in innovative eco-architecture.

His name ranked on the top of the architects of Green buildings after creating the concept of Vertical Forest and designing the most outstanding green building in the world



Our Location

The New Capital city is expected to be the largest financial ecosystem in Africa and the Middle East encompassing 6 million inhabitants and professionals from different nationalities. We are committed to putting forward this national dream of Egypt that is too soon turning to reality with the transition of the Egyptian government within the upcoming months.



Vertical Forest

We are the first to use fast-growing trees in administrative buildings in the New Administrative Capital.



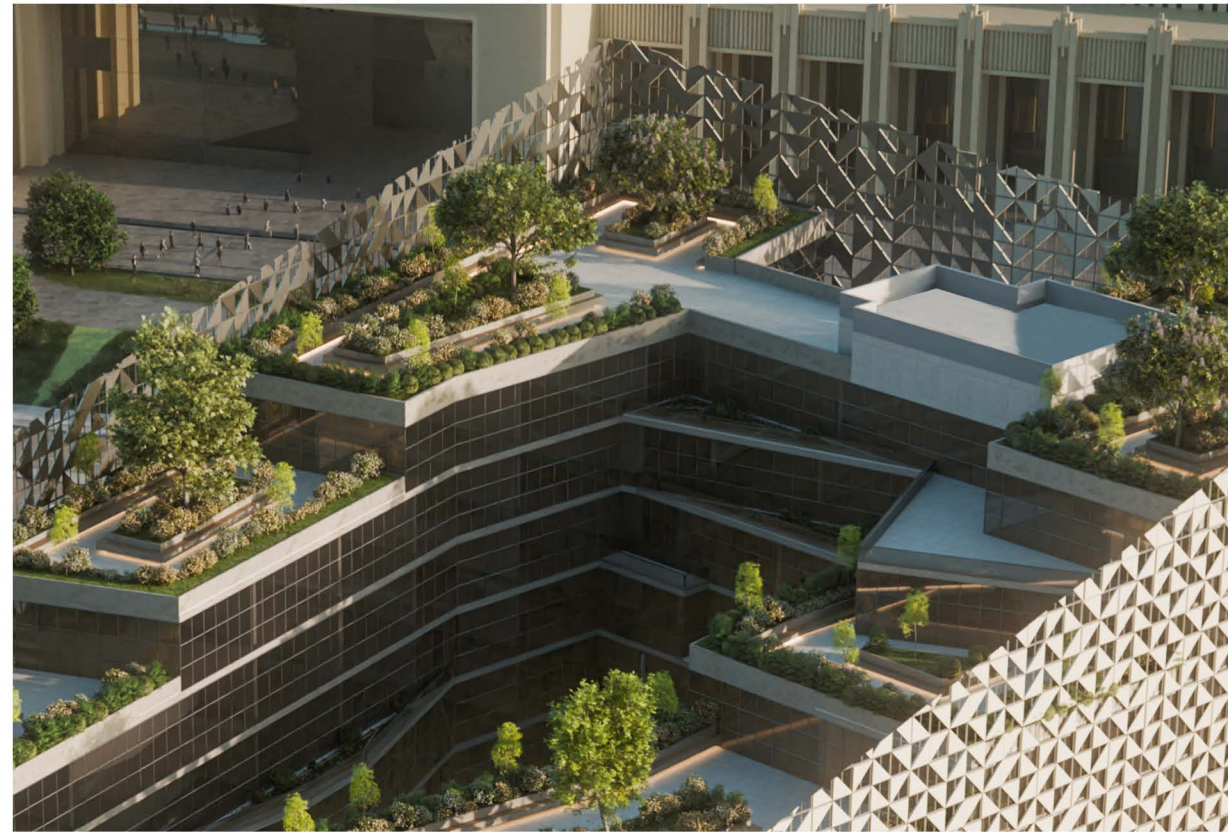
Double Façade

The double-skin façade is a system of building consisting of two skins, or façades, placed in such a way that air flows in the intermediate cavity.



Levels Green View

Levels Green Views is a design approach that integrates multi-level architecture with uninterrupted natural vistas and sustainable landscaping. By blending vertical space with greenery and open sightlines, it creates a harmonious connection between built environments and nature.





Air Filtration System

Air cleaning filters are designed to remove pollutants from indoor air, so by properly filtering your facility's air of harmful particles, you can improve the indoor environment and breathe cleaner air.



Water Recycle

We can give a second life to the water we use at different levels. Starting with water recycling at the building level, this involves the implementation of water treatment and reuse systems within the building structure itself, allowing for reduced dependence on external sources.



Rainwater Collection

Rainwater harvesting is collecting the run-off from a structure or other impervious surface in order to store it for later use.



Solar System

Solar power doesn't produce harmful emissions, thus reducing the carbon footprint of buildings.

Events & Conferences

At Archplan,developments , we believe that every successful event is the result of strategic planning, meticulous execution, and a clear understanding of our goals

Awards

" You don't grow by being handed everything . To learn, you must go through it. "

Ahmed Ashour

NICHE
LUXURY LIFESTYLE MAGAZINE

The Kingdom Awaits,
Elegance returns.
NICHE KSA 2025

Ahmed Ashour
You don't grow by being handed
Everything. To learn, you must go
Through it

25 years of BeBrand
The Brand Behind the
Brands: Celebrating
25 Years of BeBrand

AWARD 2025
EGYPT AWARD
SEVEN EDITION

TRIUMPH
LUXURY HOTEL

EGYPTAIR
A STAR ALLIANCE MEMBER

Patchi

ARCHPLAN



PROMOTING
SUSTAINABLE, S



Press Conferences

Archplan Developments is redefining New Capital's Skyscrapers. Eng. Ahmed Ashour our CEO highlighted that we are committed to sustainability in its true, smart, and green forms. This commitment is evident in our projects we are developing buildings that are environmentally friendly, smart, and livable.



OUR PARTNERS

PARTNER OF IL COURE VERDE



orange™

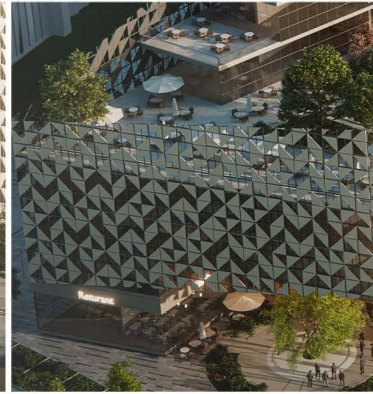
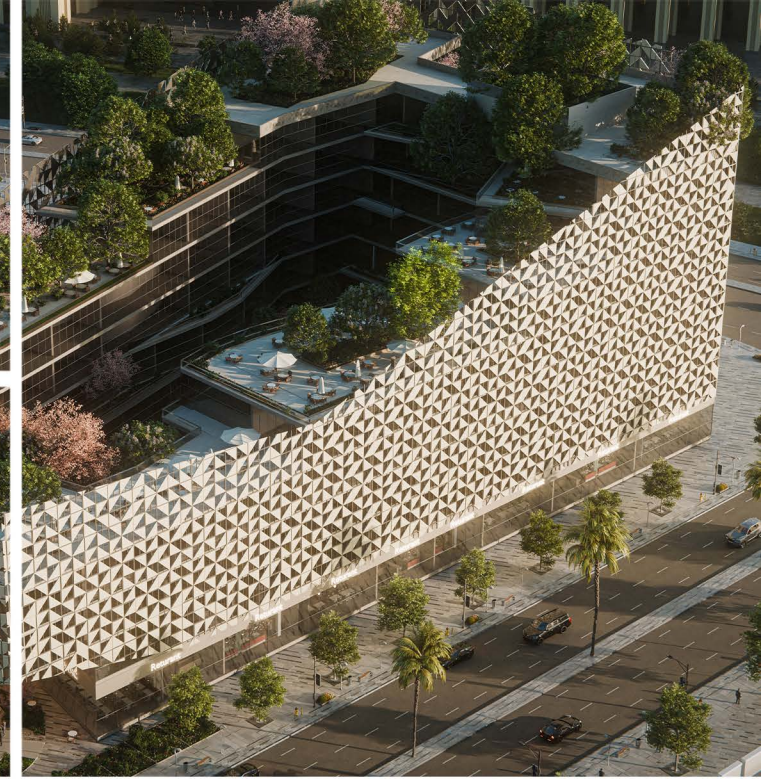
Archplan developments, the leading real estate development company, has signed a partnership agreement with Orange Egypt, the leading provider of integrated telecommunications services, to provide TRIPLE PLAY services for il coure verde.

Orange's TRIPLE PLAY services include the provision of landline, television and Internet services through one outlet based on fiber optic cables. These advanced services will deliver a vast amount of information that can reach up to one gigabyte, while also enabling connections to various other services both within and outside the units.

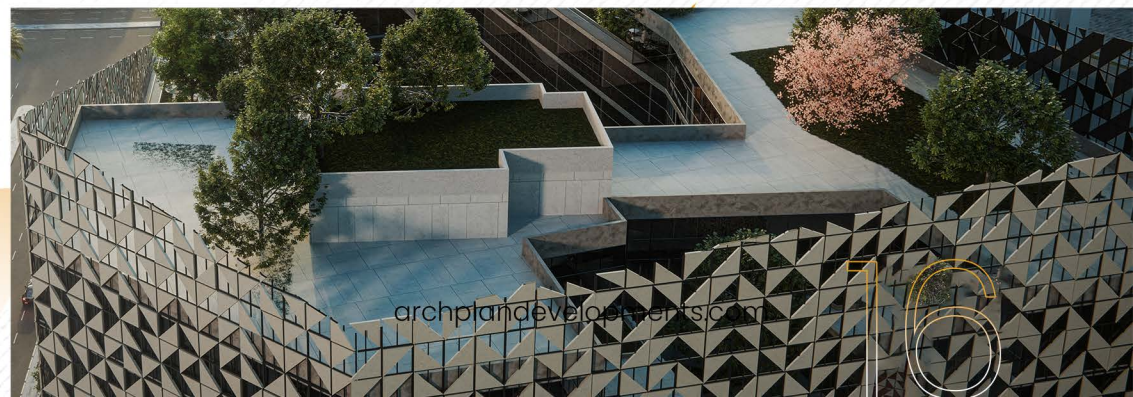
These advanced services will deliver a vast amount of information that can reach up to one gigabyte, while also enabling connections to various other services both within and outside the units.

The agreement is part of Orange's strategy to combine the power in mobile services and the expertise in digital services to ensure successful design and development of Smart Cities and Smart Homes program.

GALLERY
PARTNER OF IL COURE VERDE



IL
**CUORE
GIALLO**
NEW CAPITAL

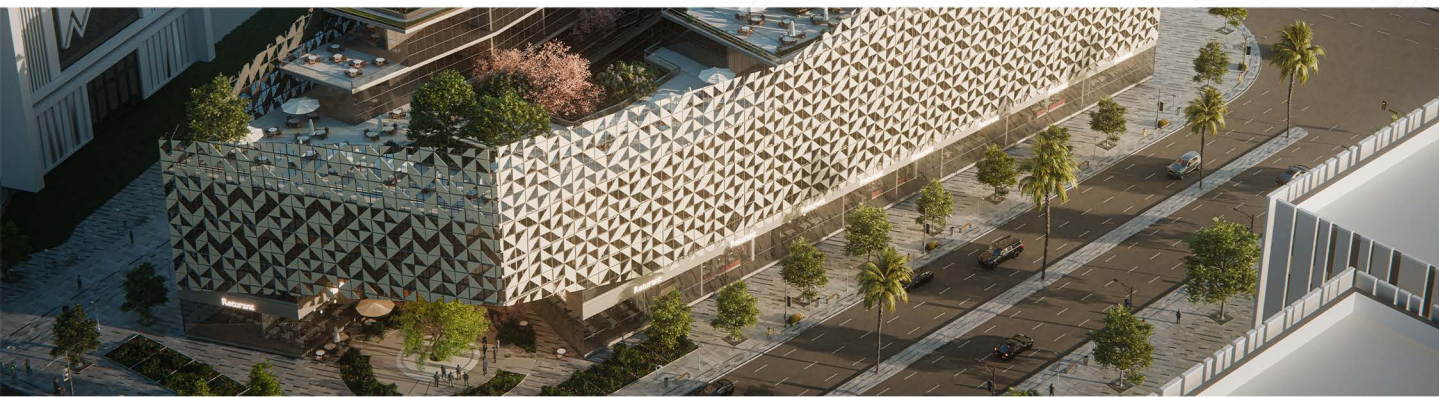
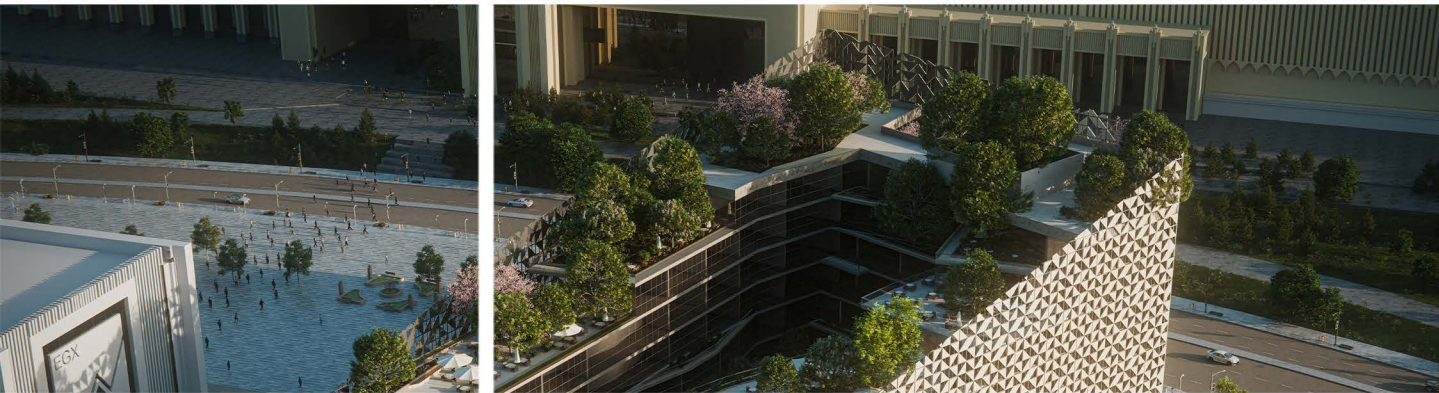


A | Sketch
the future.

archplandevlopment.com



PARTNER OF IL COURE VERDE



IL
CUORE
GIALLO
NEW CAPITAL