

BUILDING TRUST



WHO WE ARE ?

PIONEERING THE ART OF MODERN LIVING

Beginning our journey in 2015, Turath Real Estate has grown from its roots in Obour City to become a leader in the real estate market there. We've completed more than 50 projects comprising over 1,000 units across both residential and commercial sectors.

Each project represents a significant milestone in our journey of progress.

Welcome to Turath Real Estate, we elevate the property experience to new horizons, where creativity meets quality to offer a unique lifestyle.



Introducing
Turath Park



Depth Look

Smart Design

Turath Park is an integrated residential project consisting of 55 residential buildings, designed with professional and creative distribution. The project residential area is only 18% of the total area, offering a luxurious lifestyle that caters to all needs.

The models in our project include various sizes ranging from 100 to 200 square metres. Additionally, the interior spaces of the apartments vary, with some featuring 2 and 3 bedrooms.



Immortal Magic

Turath Park features a unique architectural design that combines luxury and authenticity, with its buildings adorned with elegant stone facades that add a classic and sophisticated touch, creating a distinctive residential environment that blends elegance and beauty.

In addition, the building's elegant facade features Alumetal windows and luxurious Georgian glass, along with a roof covered in blue tiles, providing residents with stunning views while ensuring thermal and sound insulation.



Relaxation Wellsprings

Life In The Midst of Nature

In Turath Park, special attention has been given to space planning, with residential units occupying only 18% of the total area, while the remaining space is dedicated to green areas, services, and facilities, reflecting the importance of mental and physical well-being.

Along with waterfalls and landscapes that add a touch of beauty, freshness, and relaxation, the compound also includes designated areas for children where they can play and enjoy. Additionally, the long pathways beside the artificial lakes provide a delightful experience for strolling and breathing in the fresh air.



Location



EIGHT DISTRICT

SECOND DISTRICT

THIRD DISTRICT

OBOUR HOSITAL

CITY CLUB

IPS



city



ELZHOR

ROAD 10

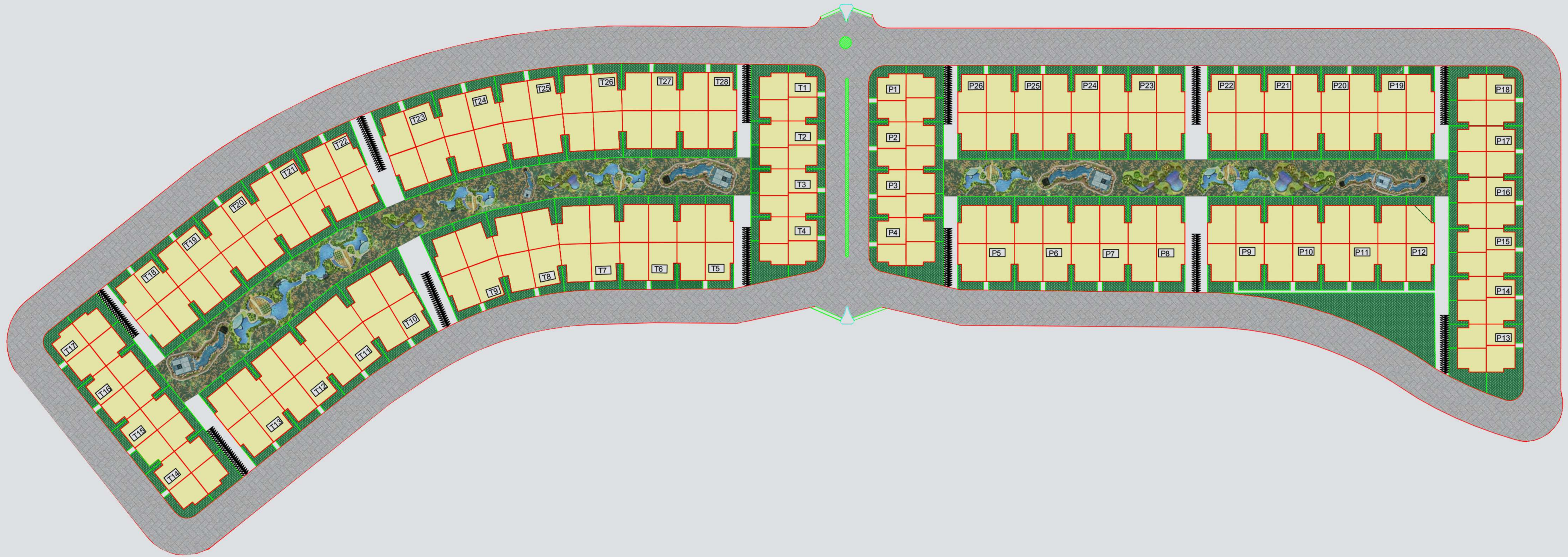
ROAD 10

ROAD 10





Master Plan



Disclaimer: Drawings are not to scale, and the dimensions are approximate. Turath Real Estate reserves the right to change the master plan, including dimensions, areas, and materials, without prior notification.

TURATH PARK

HERITAGE OF TRUST

Amenities & Services



Waterfalls

With their elegant design, the waterfalls create a calming atmosphere and enrich the environment with stunning views.



Artificial Lakes

Adding charm and relaxation, artificial lakes bring a touch of nature to the area, creating a calm feature that enhances the space.





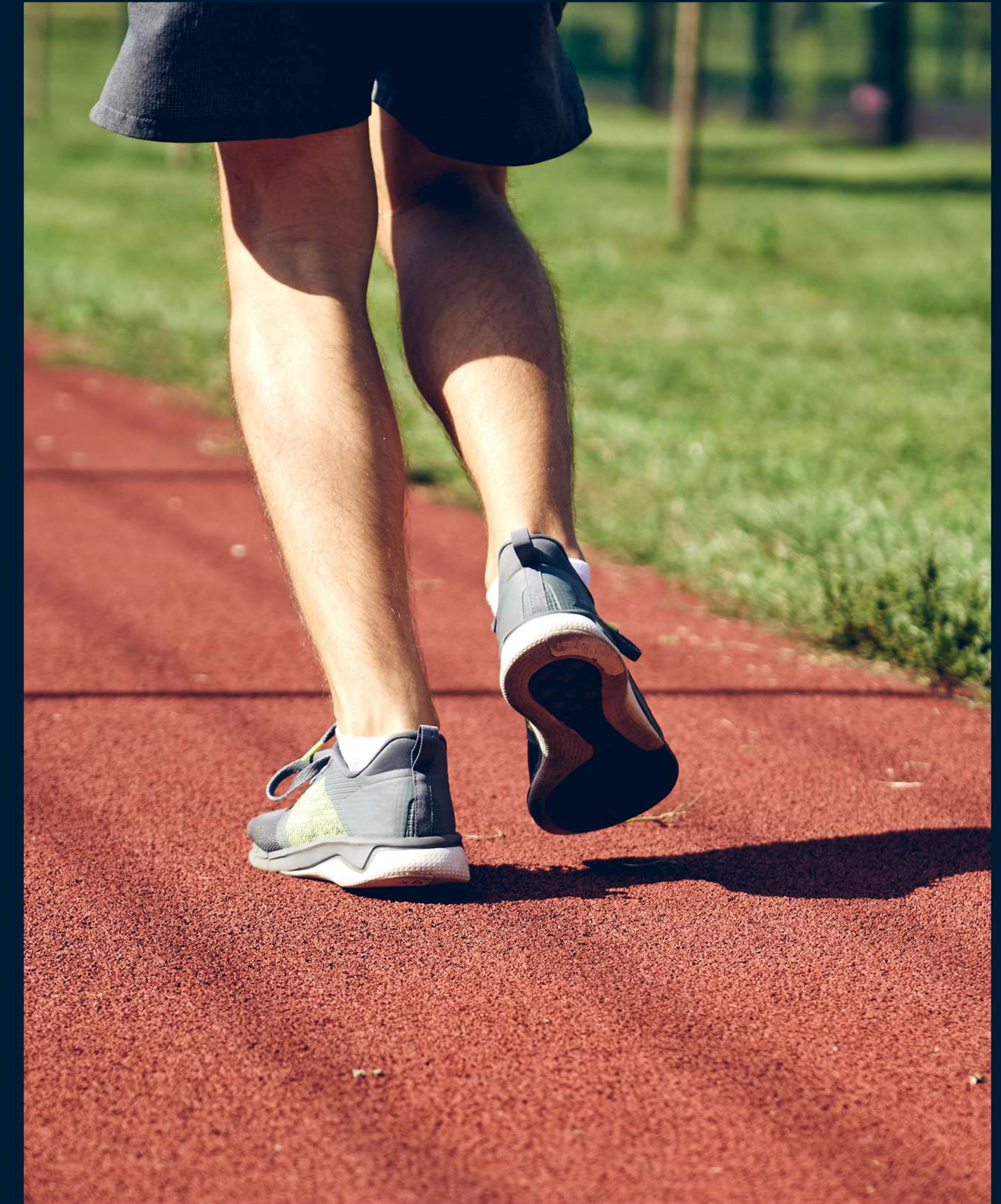
Open Areas

Families can unwind and enjoy the thoughtfully designed open areas, which create a relaxing and inviting atmosphere.



Walking Track

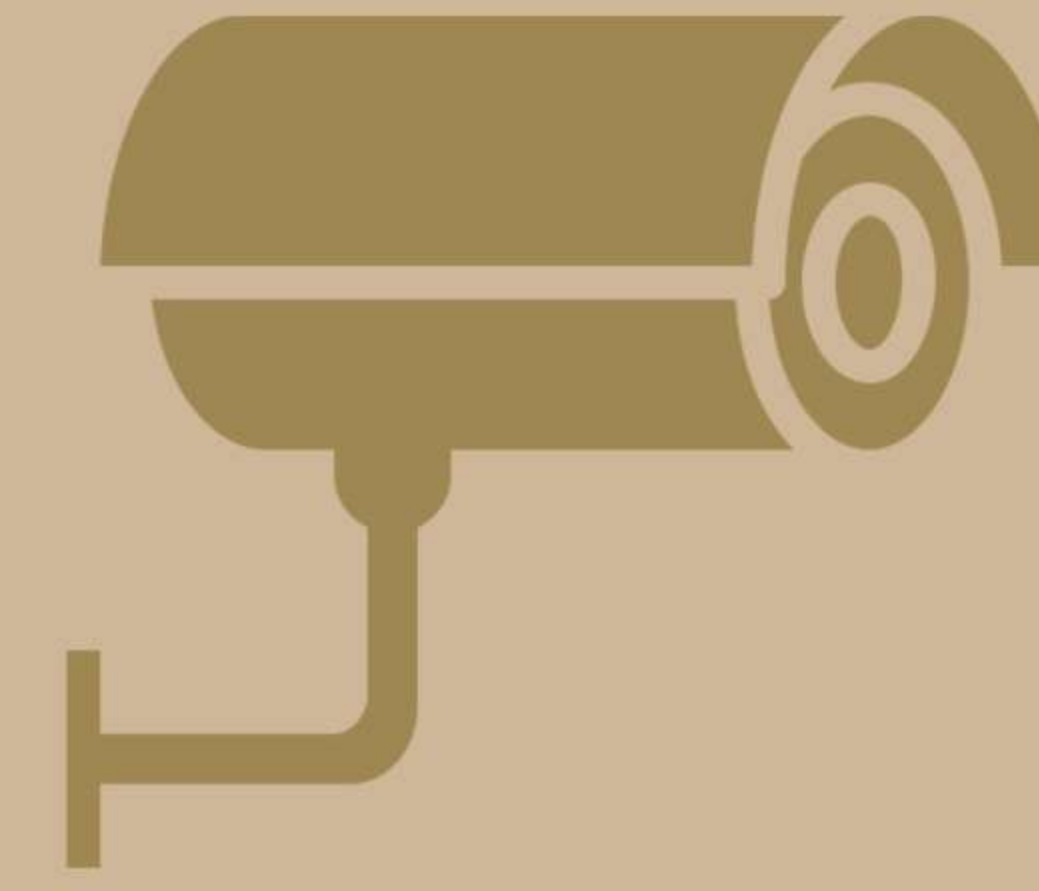
Well-designed track offers residents a peaceful space for exercise and leisure, free from traffic and noise.





7/24 Physical Guarding

With round-the-clock physical guarding, we maintain constant protection for everyone within the complex.



Surveillance Cameras

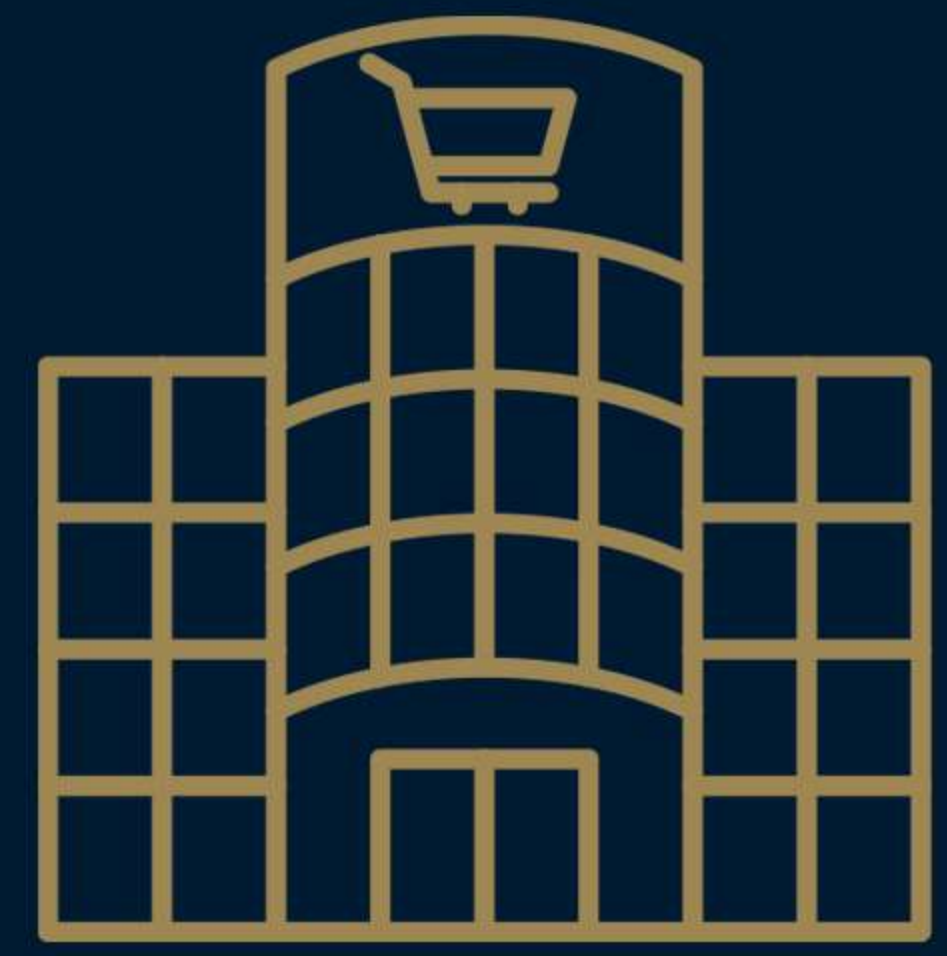
CCTV system provide reliable monitoring, ensuring every area is watched and secured at all times.



Fire system

Accessible system that provides a quick response during any fire emergency to maintain the safety.





Mall

The on-site mall completes the fully serviced lifestyle, providing effortless shopping and enjoyment for residents.



Kids Area

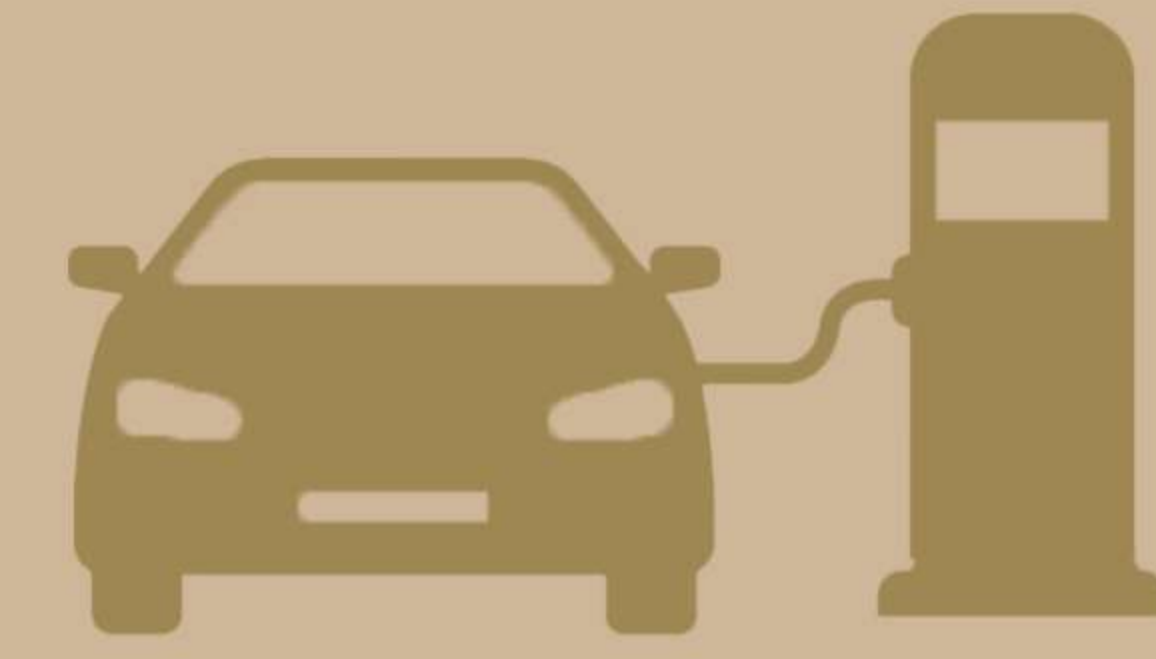
With a focus on safety and fun, the kids' areas ensure a worry-free environment where children can enjoy a variety of activities and play freely.





Private Transportation

We provide a variety of services within the complex, all designed to make life easier for residents. These services include convenient transfers to essential spots in Obour City.



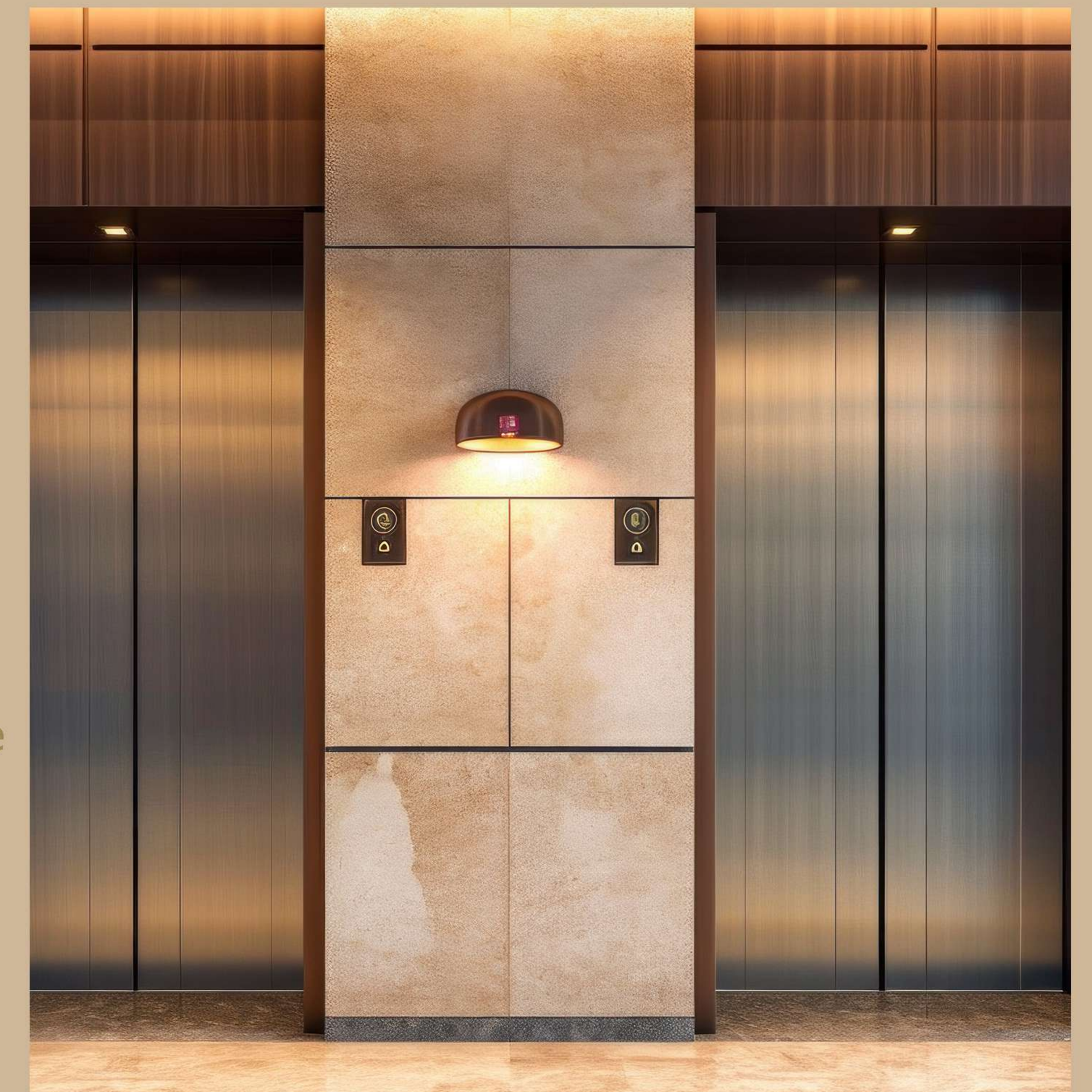
Electric Car Chargers

By promoting a more sustainable lifestyle, electric car chargers ensure residents have an easy and efficient way to recharge their cars.



Modern Elevators

The modern elevators feature technology, for maintaining comfort and reliability for residents.





TURATH PARK HERITAGE OF TRUST



Plan 1

Total Area: 125 m²

Reception: 4.9 x 4.4 m²

Master Bedroom: 3.30 x 4.88 m²

Bedroom: 3.63 x 3.75 m²

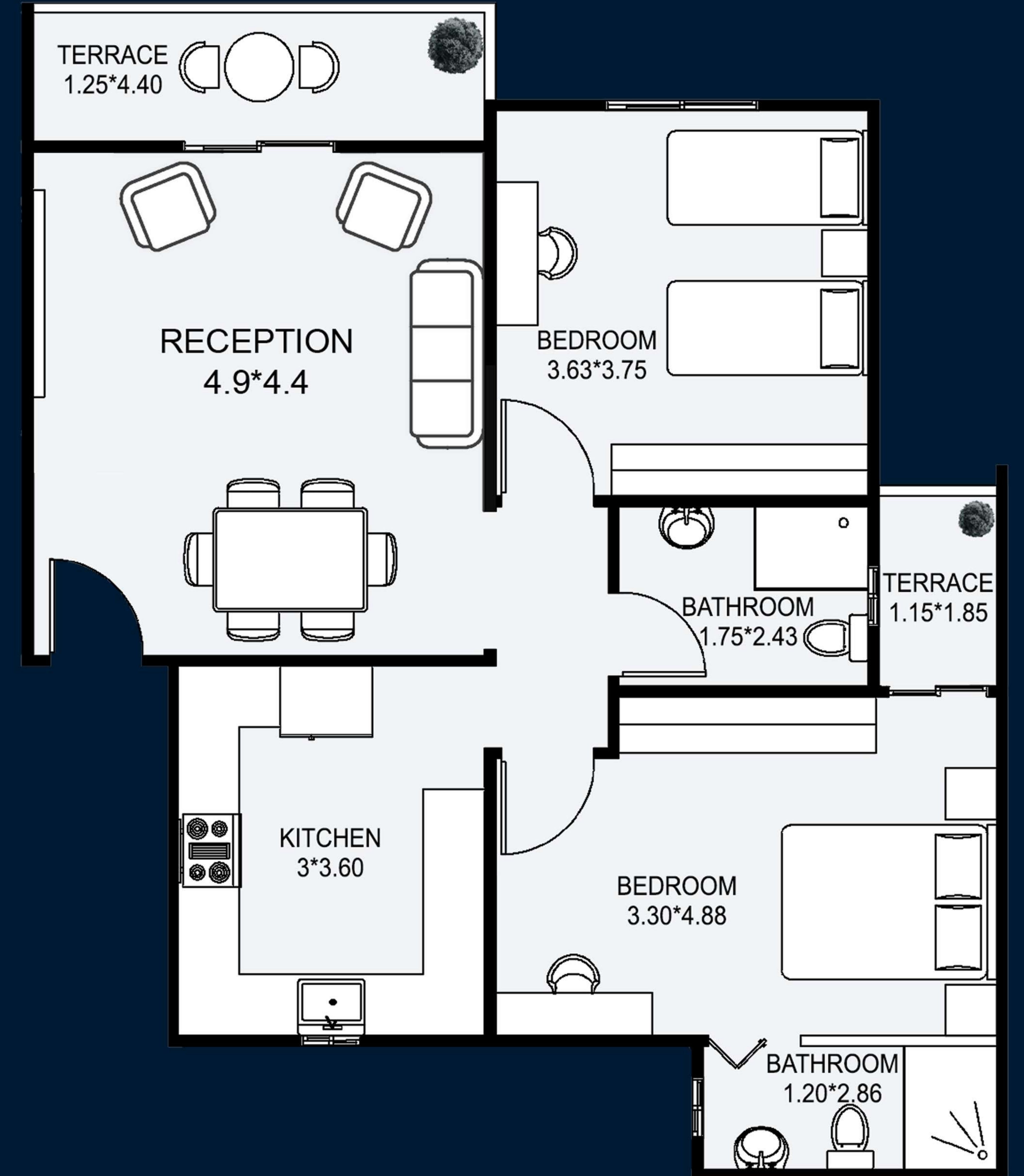
Kitchen: 3 x 3.60 m²

Bathroom 1: 2.43 x 1.75 m²

Bathroom 2: 2.86 x 1.2 m²

Terrace 1: 1.25 x 4.40 m²

Terrace 2: 1.85 x 1.15 m²





Plan 2

Total Area: 115 m²

Garden: 69 m²

Reception: 4.9 x 4.4 m²

Master Bedroom: 4.88 x 3.30 m²

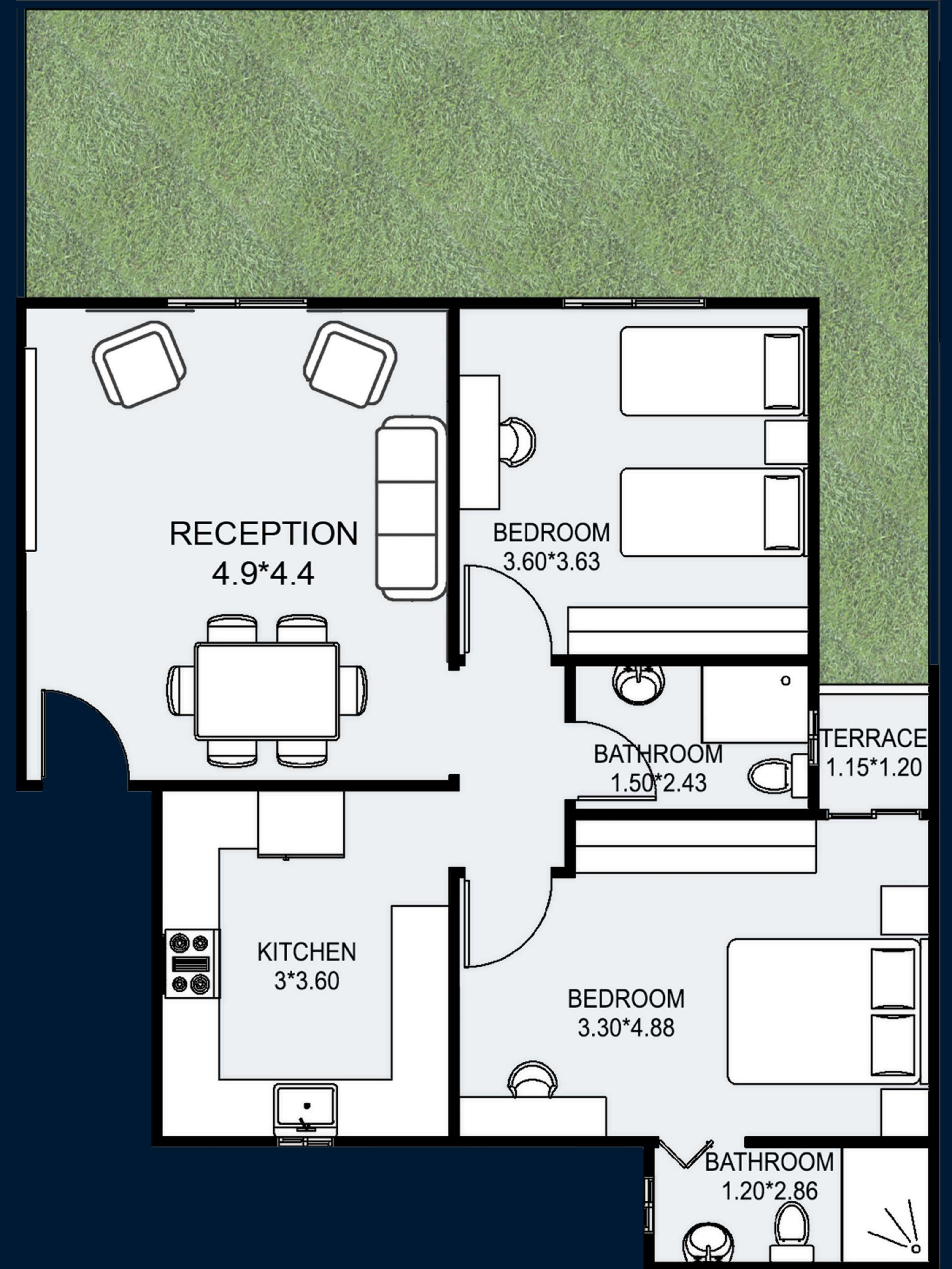
Bedroom: 3.63 x 3.60 m²

Kitchen: 3.60 x 3 m²

Bathroom 1: 2.43 x 1.50 m²

Bathroom 2: 2.86 x 1.20 m²

Terrace : 1.20 x 1.15 m²





Plan 3

Total Area: 175 m²

Reception: 4 x 7.80 m²

Master Bedroom: 3.85 x 4.20 m²

Bedroom 1: 3.90 x 4.40 m²

Bedroom 2: 3.30 x 4 m²

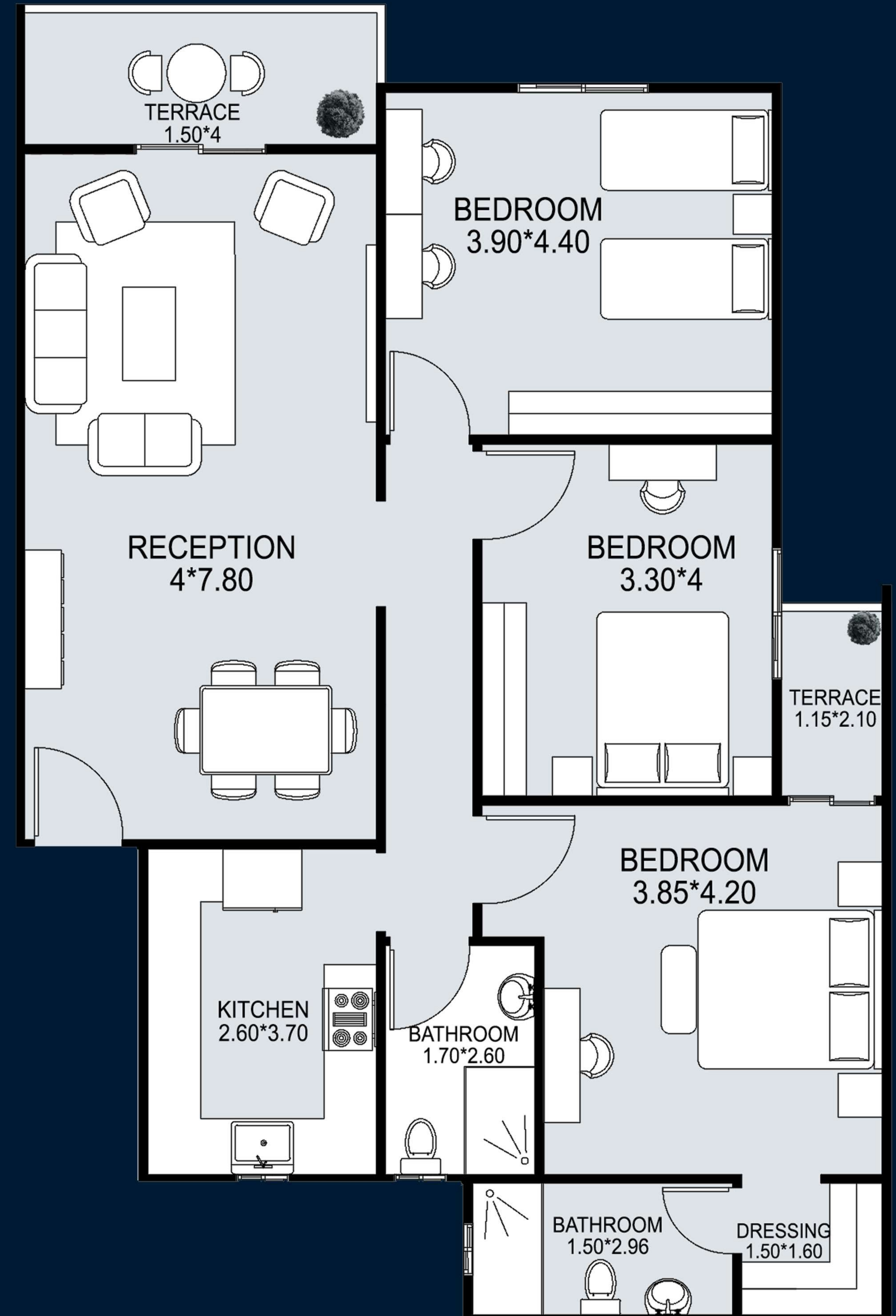
Kitchen: 2.60 x 3.70 m²

Bathroom 1: 2.60 x 1.70 m²

Bathroom 2: 2.96 x 1.50 m²

Terrace 1 : 1.50 x 4 m²

Terrace 2 : 1.15 x 2.10 m²





**TURATH
PARK**

“

**Because you are our priority, we place
the best in your hands without limits.**

”



**Scan for
more details.**